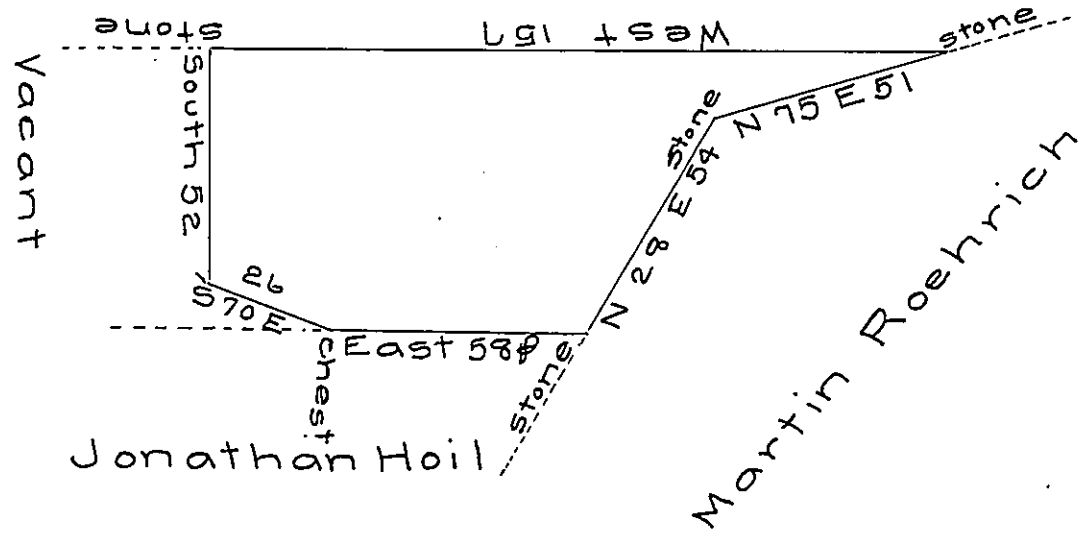


NICHOLS SILVUS



By virtue of a warrant dated the 16<sup>th</sup> November 1785 surveyed the 21<sup>st</sup> November 1785 to Martin Roehrich the above described tract of land situate in Moore township Northampton County containing thirty six acres one hundred perches and the allowance of six  $\frac{1}{2}$  cent & a

$\frac{1}{2}$  Geo. Palmer

To John Lukens Esquire }  
 Surveyor General }

*IN TESTIMONY* that the above is a copy of the original remaining on file in the Department of Internal Affairs of Pennsylvania, made conformably to an Act of Assembly approved the 16th day of February, 1833, I have hereunto set my Hand and caused the Seal of said Department to be affixed at Harrisburg, this thirtieth day of July 1906.

*Geo. A. N. Brown*  
 Secretary of Internal Affairs.